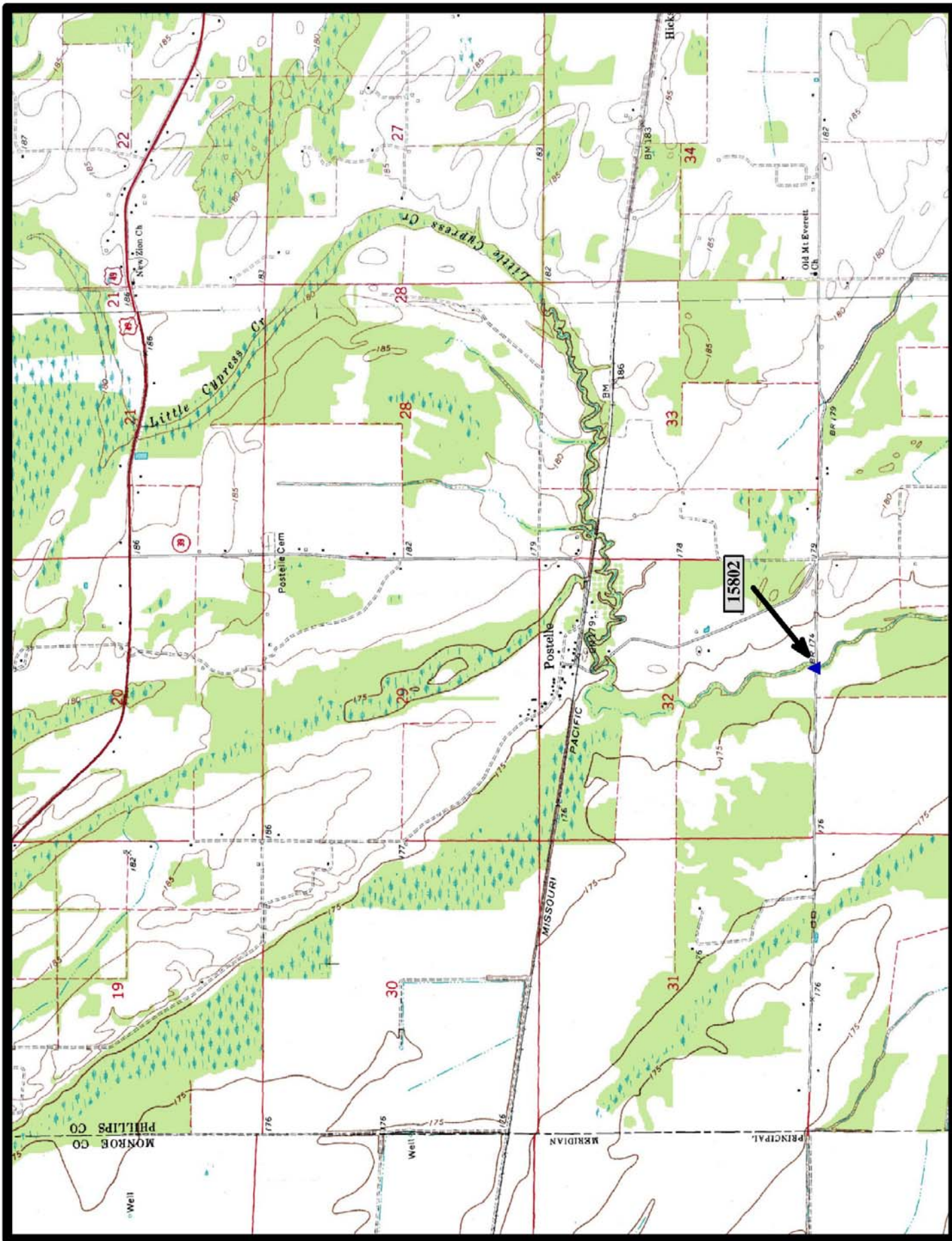


- ▲ In-Service Aluminum Multi Beam (1)
- Demolished NR Aluminum Multi Beam (0)
- ◼ Preserved Aluminum Multi Beam (0)

Aluminum Multi-Beam Bridges



HISTORIC BRIDGE #15802
COUNTY ROAD 66
PHILLIPS COUNTY
ALUMINUM MULTI-BEAM
CROSSES - LITTLE CYPRESS CREEK
DATE OF CONSTRUCTION - 1942
BUILDER - UNKNOWN
HISTORIC BRIDGE INVENTORY DATE - 1995
SHPO NUMBER - PH0164
HAER NUMBER -
DATE LISTED ON NATIONAL REGISTER - 5/18/1995
LAT./LONG. 34:33:27.41, -91:01:24.48



North

Pine City 7.5 min. Quad